

Project Performance Dashboard

Also known as the "Project Health Dashboard," this report provides users with a snapshot of their project's overall performance. Web users can use the Project Performance Dashboard to help understand the overall performance of a project based on the number of active and performing users. Here, you will be able to track the number and proportion of high, low and inactive mobile workers, as well as identify trends in mobile worker performance. The dashboard can be broken up into three sections:

Last Month's Stats

Last Month Stats

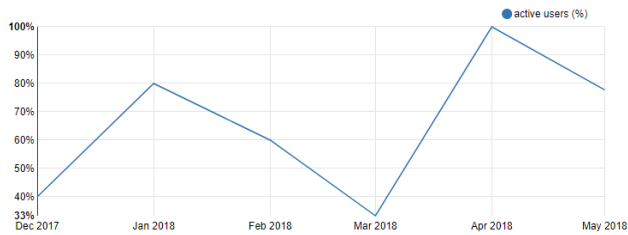
Category	April '18	Change from March
High Performing Users Users who submitted 15 or more forms last month.	3	▲ %
Low Performing Users Active users who submitted less than 15 forms last month.	2	▲ 100 %
Inactive Users Users who submitted no forms last month.	0	▼ -100 %

This section identifies the quantity and percent change of mobile workers who submitted more than 15 forms, less than 15 forms or have submitted no forms.

User Trends

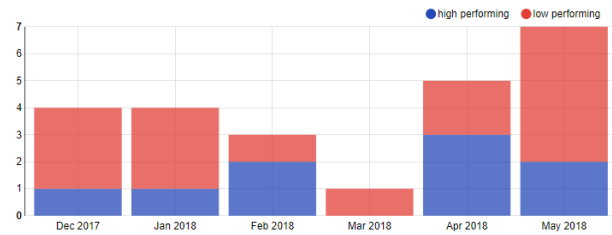
Active Users Trend

Proportion of users that are active (submitting at least one form) over time.



High / Low Performing User Trends

How the counts of high / low performing users have changed in the last six months.



The Active Users Trend graph tracks the proportion of active users over time while the High/Low Performing User Trends graph illustrates the proportion of high/low performing users.

User Charts

Low Performing Users

These are people who used CommCare last month but didn't submit 15 forms.

Username	Change in Forms Submitted	
	Last Month	This Month
will	▲ 6 6	▼ -6 0
vi1	▲ 7 9	▲ 57 66

Showing 1 to 2 of 2 entries

New Inactive Users

These are workers who stopped using CommCare last month.

Username	Change in Forms Submitted	
	Last Month	This Month
No data available in table		

Showing 1 to 0 of 0 entries

New High Performing Users

These are workers who submitted 15 forms this month and didn't last month.

Username	Change in Forms Submitted	
	Last Month	This Month
rohit	▲ 32 32	▼ -7 25
surbhi	▲ 28 28	▼ -28 0
ben	▲ 16 16	▼ -8 8

Showing 1 to 3 of 3 entries

This section displays a chart view of low performing, inactive and high performing users in the previous month.