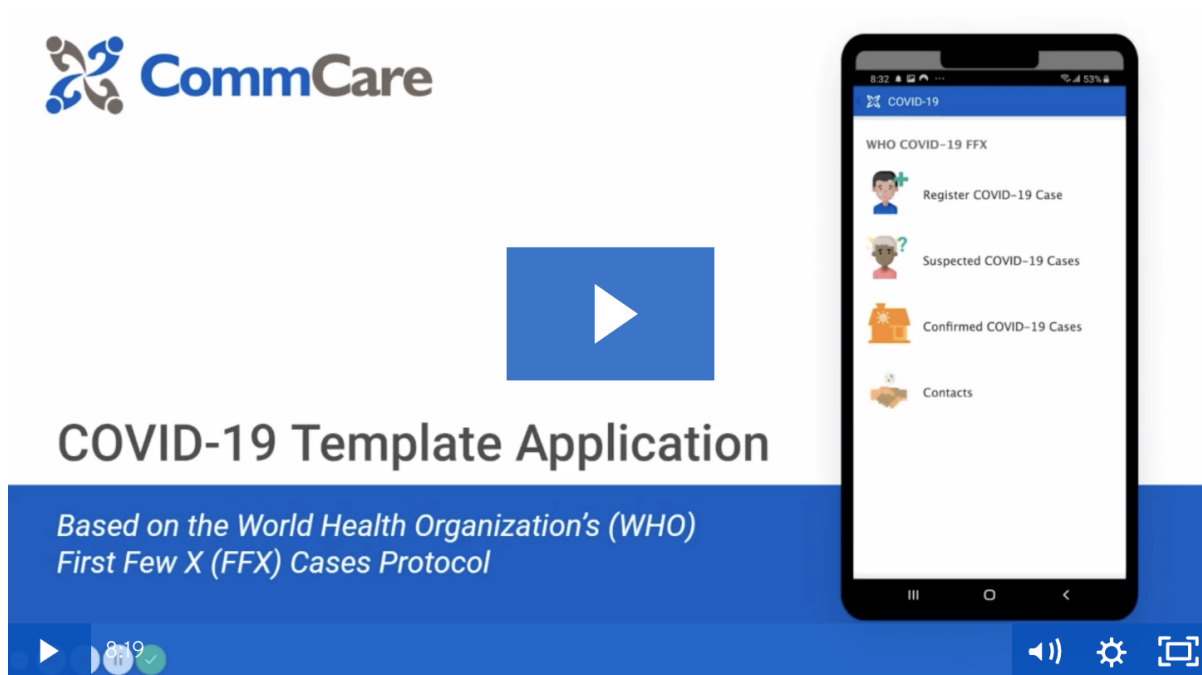


COVID-19 Template App: WHO FFX Protocol

WHO FFX Protocol Contact Tracing Application Demo Video (please click image below)

Vidéo de démonstration de l'application en français ([veuillez cliquer ici](#))



- [About the WHO FFX Protocol Contact Tracing Application](#)
 - [Download the CommCare Application](#)
 - [Application Overview](#)
 - [Supplementary - Symptom diary \(Printable\)](#)
- [Application Details](#)
 - [Application Workflow](#)
 - [Description of Forms in CommCare](#)
 - [App Case Types and Relationships](#)
 - [App Data Dictionary](#)

About the WHO FFX Protocol Contact Tracing Application

Download the CommCare Application



The WHO FFX application is available to be imported directly into your CommCare project space, along with all free COVID-19 template applications, in this library: <https://www.commcarehq.org/covid19> . The application is available in English, French, Spanish, Portuguese, and Hindi.

Application Version History:

- **April 1, 2020 (Latest Update):** Updated with Hindi translations
- **March 27, 2020:** Updated with translations in French, Spanish, and Portuguese
- **March 19, 2020:** First version released

Application Overview



The First Few X (FFX) Cases and contact investigation protocol for 2019-novel coronavirus (2019-nCoV) infection

This protocol has been designed to investigate the First Few X cases (FFX) and their close contacts. It is envisioned that the FFX 2019-nCoV investigation will be conducted across several countries or sites with geographical and demographical diversity. Using a standardized protocol such as the protocol provided here, epidemiological exposure data and biological samples can be systematically collected and shared rapidly in a format that can be easily aggregated, tabulated and analyzed across many different settings globally for timely estimates of 2019-nCoV infection severity and transmissibility, as well as to inform public health responses and policy decisions. This is particularly important in the context of a novel respiratory pathogen, such as 2019-nCoV.

You can access the original protocol directly on the [WHO's website](#). The original protocol provides a description of the [WHO forms](#), as well as the [form workflow](#).



Supplementary - Symptom diary (Printable)

Symptom diaries should be provided to each close contact, for them to record the presence or absence of various signs or symptoms for a minimum of 14 days after the administration of the initial contact questionnaire (Form B1 in the app). The symptom diary template provided below is generic. In the context of a new virus with uncertain clinical presentation and spectrum, symptom diaries may be broadened to include vomiting, diarrhoea, abdominal pain, etc., as relevant, and may be altered to include symptom data for longer than 14 days. In the event the contact develops any of these symptoms, ask him/her to inform your local public health team.

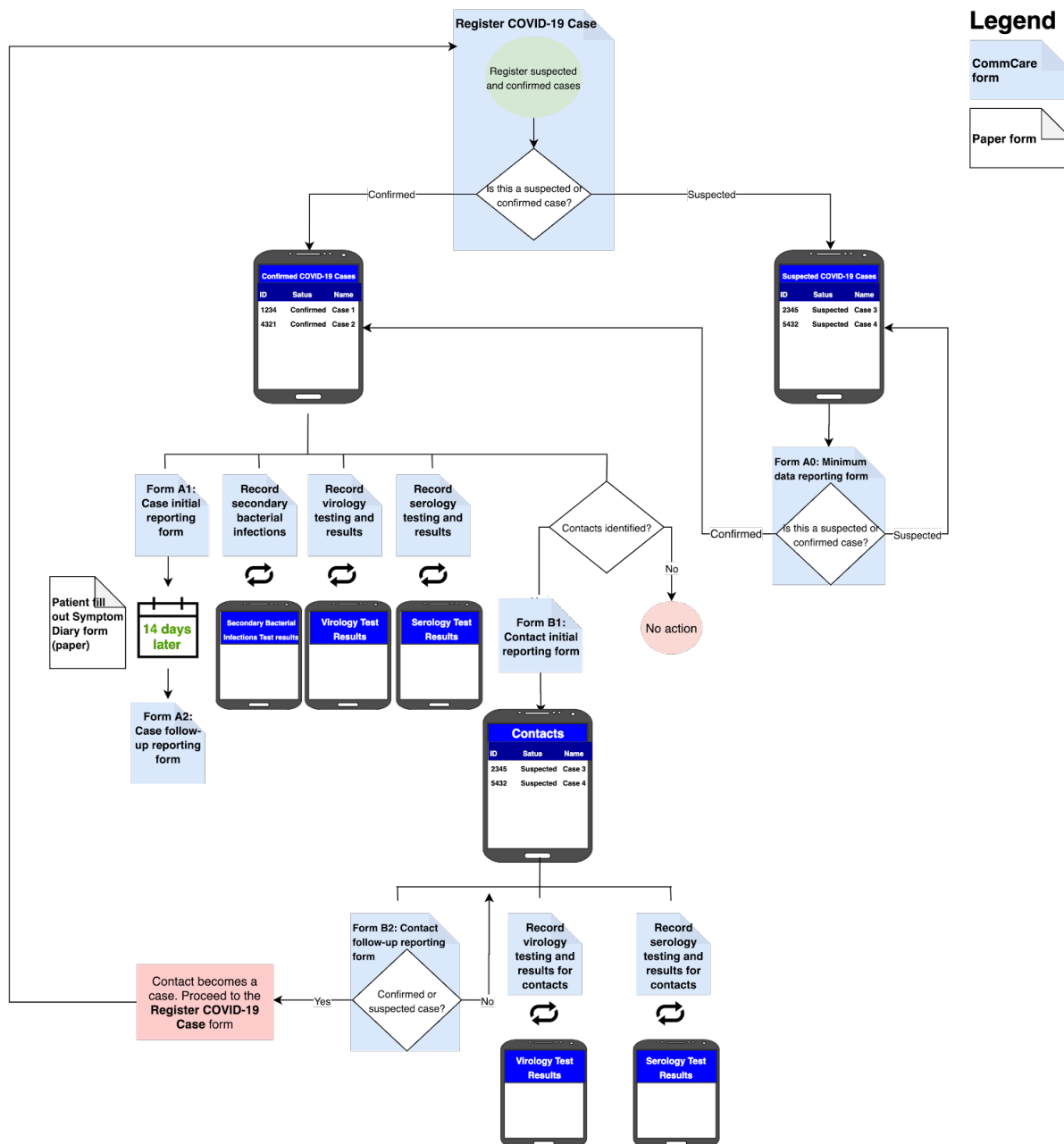
You can access the [Symptoms Diary protocol](#) here.

Application Details

Application Workflow

Using the WHO [original protocols](#), Dimagi's team of software engineers and implementation specialists built this into a CommCare application. Expand the box below for a high-level diagram of the CommCare application workflow.

CommCare Application Workflow



Description of Forms in CommCare

This application was developed entirely around the WHO First Few X (FFX) Cases protocol. The tables below break down the role of each form in the CommCare application, including:

- Form Name (CommCare)
- Form Name (WHO)
- Form Purpose
- Summary of content
- Collect information from whom
- Timing of Data collection

COVID-19 Cases (Confirmed and Suspected)

Form name: CommCare	Form Name: WHO	Form Purpose	Summary of content	Collecting information from whom	Timing of data collection
---------------------	----------------	--------------	--------------------	----------------------------------	---------------------------

Register COVID-19 Case	N/A	This form registers all cases into the application and confirms their informed consent to be enrolled	<ul style="list-style-type: none"> • Confirmation of informed consent • Basic demographic details • COVID-19 status (confirmed or suspected) 	All confirmed and suspected COVID-19 cases	As soon as possible after the suspected or confirmed case is identified
Form A0: Minimum data reporting form	Form A0	Minimum data reporting form	<ul style="list-style-type: none"> • Current status • Data collector information • Interview Respondent Information • Patient Identifier Information • Patient Symptoms • Initial sample collection • Clinical Course • Complications • Human Exposures Before Symptoms • Human Exposures to Animals 	For suspected and probable COVID-19 cases	As soon as possible after the suspected case is detected or notified
Convert to Confirmed Case	N/A	Convert a suspected COVID-19 case to a confirmed COVID-19 case	<ul style="list-style-type: none"> • Confirmation of conversion of COVID-19 case's status from suspected to confirmed 	For suspected COVID-19 cases that have been confirmed	When a suspected COVID-19 case has been confirmed and Form A0 has already been filled out at least once
Form A1: Case initial reporting form	Form A1	Case initial report form	<ul style="list-style-type: none"> • Current Status • Further Case Classification • Data Collector Information • Interview Respondent Information • Patient Information • Treating Physician Details • Patient Symptoms • Respiratory Symptoms • Other Symptoms • Patient Pre-existing Conditions • Health-care Interactions • Human Exposures - Before Symptoms 	For confirmed COVID-19 cases	As soon as possible after laboratory confirmation of a case (Day 1)
Form A2: Case follow-up reporting form	Form A2	Case follow up form	<ul style="list-style-type: none"> • Data Collector Information • Interview Respondent Information • Outcome Status • Patient Symptoms - Entirety of Illness • Respiratory Symptoms • Other Symptoms • Patient Symptoms - Complications • Patient Pre-existing Conditions 	For confirmed COVID-19 cases	14 - 21 days after completion of Form A1 or roughly 21 days after initial symptom onset
Form B1: Contact initial reporting form	Form B1	Contact initial reporting form	<ul style="list-style-type: none"> • Data Collector Information • Interview Respondent Information • Contact Details • General Exposure Information • Exposure Information • Symptoms in Contact • Respiratory Symptoms • Other Symptoms • Outcome Status • Contact Pre-Existing Conditions 	For close contacts of confirmed COVID-19 cases	As soon as possible and ideally within 24 hours after laboratory confirmation of the primary case
Record Secondary Bacterial Infection	N/A - is a subsection of Form A2	Each form records one secondary bacterial infection specimen tested	<ul style="list-style-type: none"> • Date of Sample • Type of Sample • Sample Results 	For confirmed COVID-19 cases	This form should be filled out each time a specimen is tested for secondary bacterial infection

Record Virology Testing Methods and Results	N/A - is a subsection of Form A2	Each form records the details and results of one Virology test	<ul style="list-style-type: none"> • Date of Sample • Type of Sample • Type of Test • Date and Result of Test 	For confirmed COVID-19 cases	This form should be filled out for each Virology test performed on a confirmed COVID-19 case
Record Serology Testing Methods and Results	N/A - is a subsection of Form A2	Each form records the details and results of one Serology Test	<ul style="list-style-type: none"> • Date of Sample • Type of Sample • Type of Test • Date and Result of Test 	For confirmed COVID-19 cases	This form should be filled out for each Serology Test performed on a confirmed COVID-19 case
Secondary Bacterial Infection Test Results	N/A	This case list presents the details collected in the Record Secondary Bacterial Infection form	Displays: <ul style="list-style-type: none"> • Date of Sample • Type of Sample • Sample Results 	N/A	N/A
Virology Test Results	N/A	This case list presents the details collected in the 'Record Virology Testing Methods and Results' form	Displays: <ul style="list-style-type: none"> • Date of Sample • Type of Sample • Type of Test • Date and Result of Test 	N/A	N/A
Serology Test Results	N/A	This case lists presents the details collected in the 'Record Serology Testing Methods and Results' form	Displays: <ul style="list-style-type: none"> • Date of Sample • Type of Sample • Type of Test • Date and Result of Test 	N/A	N/A

Contacts of COVID-19 Cases

Form name: CommCare	Form Name: WHO	Form Purpose	Summary of content	Collecting information from whom	Timing of data collection
Form B1: Contact initial reporting form	Form B1	Contact initial reporting form	<ul style="list-style-type: none"> • Data Collector Information • Interview Respondent Information • Contact Details • General Exposure Information • Exposure Information • Symptoms in Contact • Respiratory Symptoms • Other Symptoms • Outcome Status • Contact Pre-Existing Conditions 	For close contacts of confirmed COVID-19 cases	As soon as possible and ideally within 24 hours after laboratory confirmation of the primary case

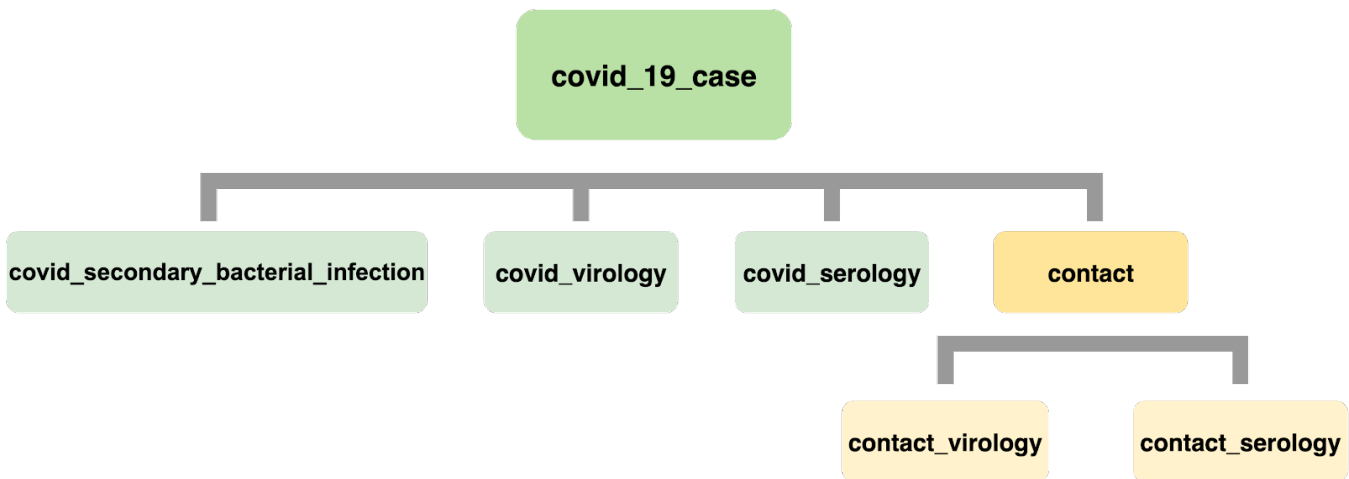
Form B2: Contact follow-up reporting form	Form B2	Contact follow-up form	<ul style="list-style-type: none"> • Final Contact Classification • Data Collector Information • Contact Location • Interview Respondent Information • Exposure Information • Symptoms in Contact • Respiratory Symptoms • Other Symptoms • Contact Pre-existing Conditions 	For close contacts of confirmed COVID-19 cases	14-21 days after the completion of Form B1
Record Virology Testing Methods and Results	N/A - is a subsection in forms B1 and B2	Each form records the details and results of one Virology test	<ul style="list-style-type: none"> • Date of Sample • Type of Sample • Type of Test • Date and Result of Test 	For close contacts of confirmed COVID-19 cases	This form should be filled out for each Virology test performed on a contact of a COVID-19 case
Record Serology Testing Methods and Results for Contacts	N/A - is a subsection in forms B1 and B2	Each form records the details and results of one Serology Test	<ul style="list-style-type: none"> • Date of Sample • Type of Sample • Type of Test • Date and Result of Test 	For close contacts of confirmed COVID-19 cases	This form should be filled out for each Serology Test performed on a confirmed COVID-19 case
Virology Test Results	N/A	This case list presents the details collected in the 'Record Virology Testing Methods and Results for Contacts' form	<p>Displays:</p> <ul style="list-style-type: none"> • Date of Sample • Type of Sample • Type of Test • Date and Result of Test 	N/A	N/A

Serology Test Results	N/A	This case lists presents the details collected in the 'Record Serology Testing Methods and Results for Contacts' form	Displays: <ul style="list-style-type: none"> • Date of Sample • Type of Sample • Type of Test • Date and Result of Test 	N/A	N/A
-----------------------	-----	---	---	-----	-----

App Case Types and Relationships

Like many CommCare applications, this application uses case management to keep track of progress of various points of interest. To learn more about the case types and relationships, please review your application's [case summary](#).

Case Types and Relationships



App Data Dictionary

The application's [case summary](#) is a great way to see every case property and form question. However, some properties are more critical than others. Here are the most important case properties and values, organized by key information related to COVID-19 cases (confirmed and suspected) and contacts of COVID-19 cases:

- COVID-19 cases (confirmed and suspected)
 - COVID-19 case properties
 - COVID-19 case secondary bacterial test results
 - COVID-19 case virology test results
 - COVID-19 case serology test results
- Contacts of COVID-19 cases
 - Contact case properties
 - Contact case virology test results
 - Contact case serology test results

COVID-19 Cases (Confirmed and Suspected)

COVID-19 case properties	covid_19_case case
patient_case_status	
confirmed	The patient is a confirmed COVID-19 case
suspected	The patient is a suspected COVID-19 case

date_of_first_symptom_onset	The date the patient first experienced symptoms
current_status	
alive	The patient is alive
dead	The patient is dead
outcome_status	
recovered	Confirmed case has recovered
still_ill	Confirmed case is still ill
dead	Confirmed case is dead
unknown_ltfu	Confirmed case outcome is unknown/patient is lost to follow up
further_case_classification	
primary	This was a primary case
secondary	This was a secondary case
imported	That was an imported case
patient_was_ever_hospitalized	
yes	Patient was hospitalized
--- (blank)	Patient was not reported as hospitalized
patient_date_of_birth	The covid_19_case's date of birth
form_completion_date_a0	Date form A0 (Minimum data reporting form for suspected cases) was completed
form_completion_date_a1	Date form A1 (Case initial reporting form for confirmed cases) was completed
form_completion_date_a2	Date form A2 (Case follow-up reporting form for confirmed cases) was completed. Should be completed 14 days after form A1.
COVID-19 case secondary bacterial test results	covid_secondary_bacterial_infection case
date_of_sample	Date the secondary bacterial infection sample was collected
type_of_sample	Type of sample taken
sputum	Sputum sample was taken
endotracheal_aspirate	Endotracheal aspirate sample was taken
pleural_fluid	Pleural fluid sample was taken
csf	CSF sample was taken
blood	Blood sample was taken
urine	Urine sample was taken
faeces	Faeces sample was taken
other	Other type of sample was taken
positive_results	Positive results from secondary bacterial infection test
haemophilus_influenza	Haemophilus influenza
mrsa	MRSA
staphylococcus_aureus	Staphylococcus aureus
streptococcus_pneumoniae	Streptococcus pneumonia
e_coli	E. coli
other	Other organism
number_secondary_infections	Total count of secondary bacterial infection tests per patient

COVID-19 case virology test results	covid_virology case
date_sample_collected	Date the virology sample was collected
date_sample_received	Date the virology sample was received by the lab
type_of_sample	Type of sample taken
nasal_swab	Nasal swab
throat_swab	Throat swab
nasopharyngeal_swab	Nasopharyngeal swab
other	Other type of sample
type_of_test	Type of virology test
pcr	PCR
whole_genome_sequencing	Whole genome sequencing
partial_genome_sequencing	Partial genome sequencing
other	Other
result	Virology test result
positive	Positive virology test result for COVID-19
negative	Negative virology test result for COVID-19
positive_for_other	Positive virology test result for other pathogens
result_date	Date the virology test result was obtained
number_virology_tests	Total count of virology tests per patient
COVID-19 case serology test results	covid_serology case
date_sample_collected	Date the virology sample was collected
date_sample_received	Date the virology sample was received by the lab
type_of_sample	Type of sample taken
serum	Serum
other	Other
type_of_test	Type of serology test
elisa_ifa	ELISA/IFA
igm_igg	IgM/IgG
neutralization_assay	Neutralization assay
other	Other
result	Serology test result
positive	Positive serology test result
negative	Negative serology test result
inconclusive	Inconclusive serology test result
result_date	Date the serology test result was obtained
number_serology_tests	Total count of serology tests per patient

Contacts of COVID-19 Cases

Contact properties	contact case type
---------------------------	--------------------------

final_contact_classification	
never_ill_not_a_case	Contact was never ill/not a case
conrmed_secondary_case	Contact is a confirmed secondary case
ltfu	Contact is lost to follow-up
suspected_case	Contact is a suspected case
probable_case	Contact is a probable case
date_of_first_symptom_on_set	The date the contact first experienced symptoms
outcome_status	
recovered	contact has recovered
still_ill	contact is still ill
dead	contact is dead
unknown_ltfu	contact outcome is unknown/patient is lost to follow up
form_completion_date_b1	Date form B1 (contact initial reporting form for confirmed cases) was completed
form_completion_date_b2	Date form A2 (contact follow-up reporting form for confirmed cases) was completed. Should be completed 14 days after form B1.
contact_date_of_birth	The contact's date of birth
Contact virology test results	contact_virology case
date_sample_collected	Date the virology sample was collected
date_sample_received	Date the virology sample was received by the lab
type_of_sample	Type of sample taken
nasal_swab	Nasal swab
throat_swab	Throat swab
nasopharyngeal_swab	Nasopharyngeal swab
other	Other type of sample
type_of_test	Type of virology test conducted
pcr	PCR
whole_genome_sequencing	Whole genome sequencing
partial_genome_sequencing	Partial genome sequencing
other	Other
result	
positive	Positive virology test result for COVID-19
negative	Negative virology test result for COVID-19
positive_for_other	Positive virology test result for other pathogens
result_date	Date the virology test result was obtained
number_virology_tests	Total count of virology tests per patient
Contact serology test results	contact_serology case
date_sample_collected	Date the virology sample was collected
date_sample_received	Date the virology sample was received by the lab
type_of_sample	Type of sample taken

serum	Serum
other	Other
type_of_test	Type of serology test
elisa_ifa	ELISA/IFA
igm_igg	IgM/IgG
neutralization_assay	Neutralization assay
other	Other
result	Serology test result
positive	Positive serology test result
negative	Negative serology test result
inconclusive	Inconclusive serology test result
result_date	Date the serology test result was obtained
number_serology_tests	Total count of serology tests per patient